



WELCOME



# JACK ENTERPRISES

A new thought of all work solutions



# *CONTENTS*

COMPANY

QUALITY MANAGEMENT

OUR VALUES

OUR CLIENT

SUMMER TRAINING

CONTACTS

PROJECTS

SERVICES



# JACK ENTERPRISES

- COMPANY OVER VIEW

- **JACK ENTERPRISES** The Company was formed in the year of 2018 by professionals who are specialists in Telecommunication Engineering for Mobile Network's Innovative & Efficient resourcing. We believe in the fundamental rethinking and radically redesign of the processes of outsourcing to achieve dramatic improvement in critical, contemporary measures of performance such as cost, quality, service, speed and the implementation of deliberate and fundamental change in outsourcing processes to achieve breakthrough in performance. Although, new, but in a very short span we have been able to place JACK with other companies of repute in the same arena; all because of our day-by-day better performance. It's a firm with distinct features that render all sorts of services related to telecommunication in a best way, at competitive rate and at one place. We are proving cost effective telecommunication engineering services to mobile operator & equipment vendor. Mobile network Engineering is our business , we understand what operators & Vendor need to engineer networks. Our services are designed to fulfill your engineering requirements while reducing headcount. we are able to reduce our cost base and pass on the benefits to our clients.



# OUR VALUES & OBJECTIVES



# SUMMER TRAINING



**CW TEST**

**RF SURVEY**

**RF PLANNING**

**NETWORK OPTIMIZATION**

**LOS SURVEY**

**TRANSMISSION PLANNING**

**DRIVE TEST & BENCHMARKING**

**CIVIL & ELECTRICAL (E2E PROJECTS)**

**I & C OF MUX, M/W LINK, BTS**

**LAND ACQUISITION**

**EMF TESTING**

**MANPOWER SUPPLY & HOUSE KEEPING**

# **TRAINING MODULES**



**CW TEST :** This is at beginning of design when no site has been built or even selected. All test sites are temporary/dummy sites – At this point drive test is performed mostly for characterization of propagation and fading effects in the channel. The objective is to collect field data to optimize or adjust the prediction model for preliminary simulations. Depending on the measurement tools it may also provide us with statistics of fading and delay spread in the channel to be used as part of LBA and future optimization studies.

**RF SURVEY :** collecting Lat /Long of Hot Spots ( Revenue Generating places), find out the nominal from where all the hot spots can be covered , selection of suitable option within the search ring of nominal, describing the clutter with obstruction, check the average clutter height, taking the photographs of clutter, making the layout of sites & its access, estimation of GSM antenna height, orientation & tilt.





**RF PLANNING :** Finding the nominal according to hot spots using planning tool . Making prediction plot , calculating GSM antenna , azimuth and tilt interference calculation , frequency reuse planning, preparing integration package or site data base. Planning for TMA implementation Air combining Implémentation , diversity implémentation etc.

**RF OPTIMIZATION:** Monitoring key indicators related to the RF network, the constant adjustment of the RF network parameters, the analysis of the parameters and physical configurations used in the network stations, the monitoring of the cells that impact in a negative way the quality, and the constant monitoring of network traffic. Daily KPI monitoring, Cluster Optimization,

**LOS SURVEY:-** Microwave radio link is usually engineered on the basis of there being a clear line of sight (LOS) between the antennas at opposite ends of link. Checking –the path profile between two antennas, the AMSL & obstruction of the path, the obstruction height, calculating minimum M/W antenna height & its size to make the link feasible. Topo (Contour) map study, calculating the radius of frezonal zone which is the major factor to calculate antenna height.





## METHOD EMPLOYED FOR LOS SURVEY

Route Track Survey  
Mirror Flash Survey  
Balloon Survey

**TRANSMISSION PLANNING:** Nominal connectivity plan for new sites, BSC/MSR plan, Inter MSR connectivity plan , BSC/MSR redundancy plan, Frequency planning for M/W link, Interference analysis, PDH/SDH planning, PDH/SDH loop planning, Link Budgeting, preparation of BOQ, Q1 plan, DCN plan, OFC planning, MUX planning.

**DRIVE TEST & BENCHMARKING:** Drive testing is done continually to monitor the health of the network, check the Rx level & Rx quality of the drive route, check whether handovers taking place successfully or not, check the interference (C/I) ratio etc. This service allows operators to have a fast and efficient way to verify the Quality of Service of their networks regarding coverage and quality from the perspective of its users. We offer a complete solution (Drive test and consultants) that enables operators and suppliers to have a very effective method to evaluate and correct weaknesses found in the network, thus ensuring the high quality of voice and data services that users demand. "The Drive tests Reports delivered bring practical information for the analysis of the area involved. They are considered to be very complete and useful. We have developed a complete benchmarking service based on field data collection and a comparative analysis process involving the quality and coverage of different networks audited. This analysis is followed by a full report and a set of recommendations that allow the customer to identify their strengths and weaknesses compared to its major competitors, always with the objective of improving the network quality by applying the recommendations.

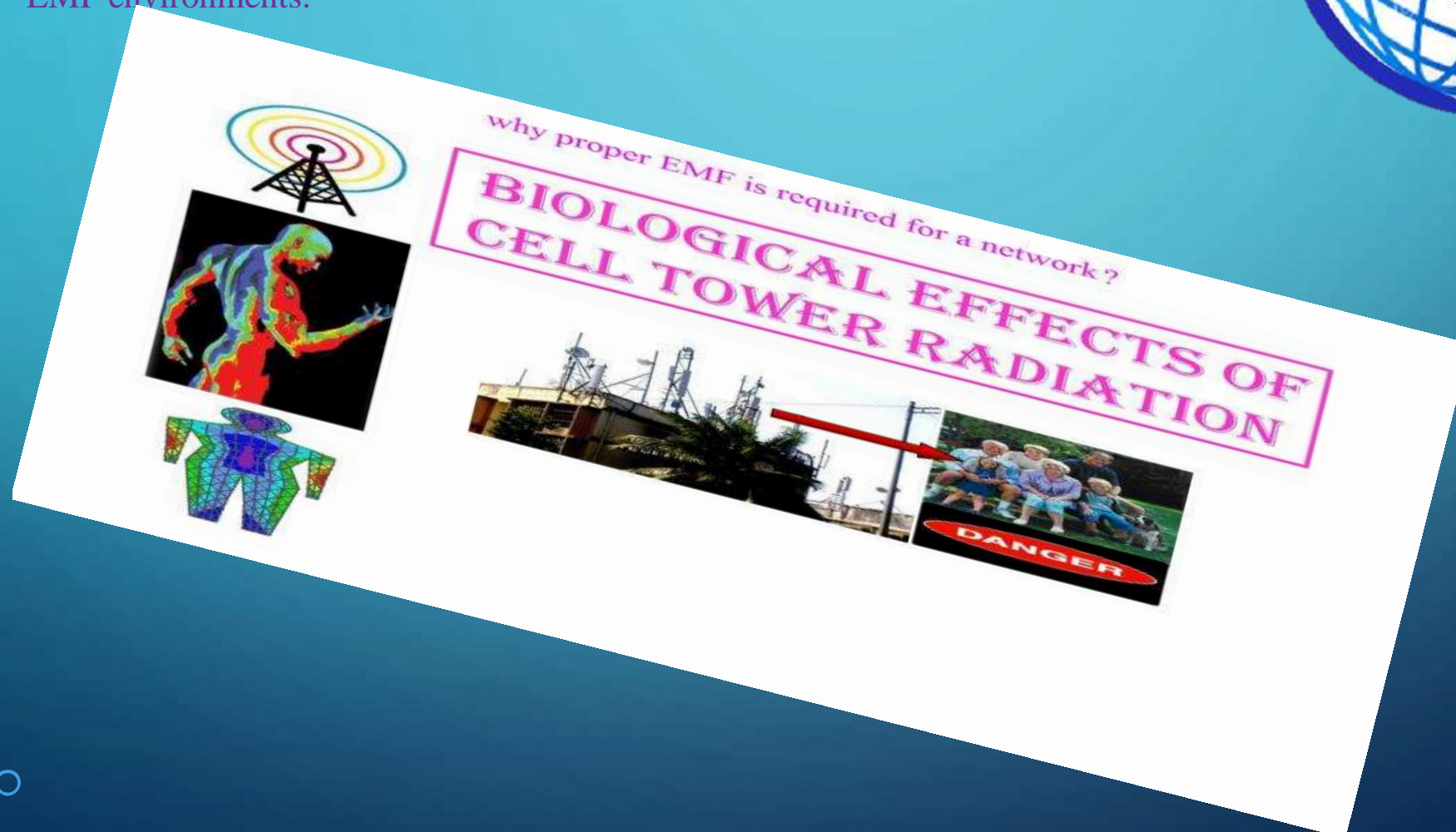


- **SITE AUDIT:-** Observation of actual Rx level, Rx Quality, Channels, LAC, Country code, Network code with cell Id by using Net Monitor, Verification of RF antenna so that the actual Network coverage can be observed. Also, checking of RF antenna- height and it's type, antenna orientation and tilt, pole mount tilt, All m/w antenna with actual height and orientation, tower height, actual Lat/Long of sites, whether site is Indoor or Outdoor, Type of RF cable used and it's length, whether TMA or TMB installed or not, to estimate the possibilities of increase/decrease of GSM antenna height, assessment of site location and clutter detail with photographs at every 30 degree angle, information of competitors sites- shared or within 300 mtr, to prepare the actual layouts of sites with access.

**LAND ACQUISITION:-** We have well experienced employees for completing the land acquisition process in least possible time. We take your RF design for the governmental approval, for mutually amicable negotiation and for final engineered design.



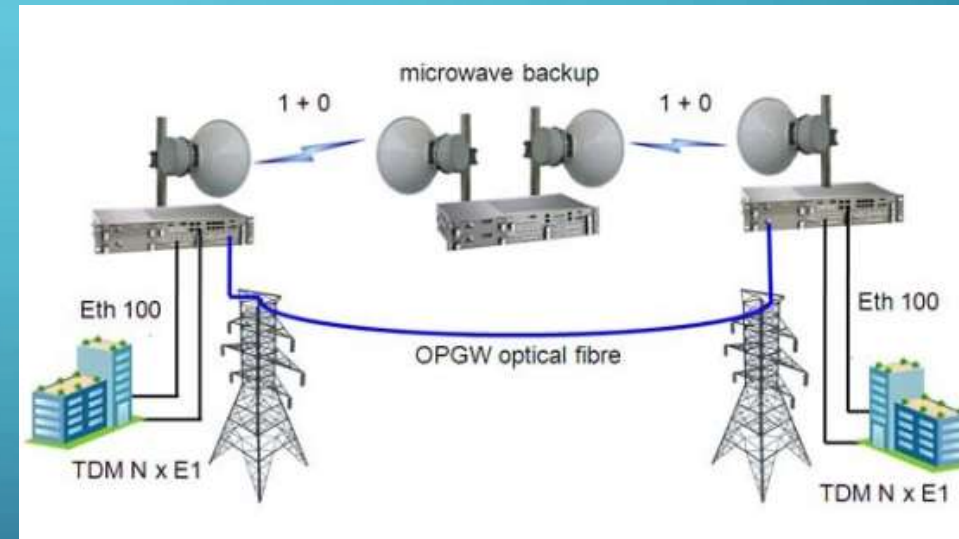
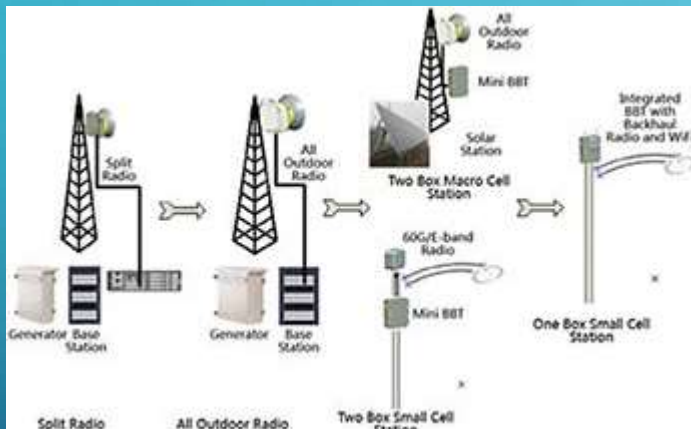
**EMF TESTING:-** We offer emission testing , measure the various EMF field ranges with an EMF tester and professional emf testing equipment and assess what type of and how much EMF radiation is present. EMF can decipher and answer an EMF problem or question, find a solution and create low EMF environments.







**I & C OF MUX, M/W LINK, BTS:-** We provide services in BTS outdoor, indoor works and take I & c projects for telecom networks. We have highly experienced Teams for handling telecom equipments. We are also engaged in GSM antenna installation with desired height and orientation, Installation of Radio ,Base station, installation of transmission rack , MUX etc.





## **MANPOWER SUPPLY & HOUSE KEEPING SERVICES**

We also provide Manpower Supply , House Keeping & Catering services to our various customers for their circle and cluster offices . Currently we are Serving to NSN ,Ericsson ,Idea & Uninor with our quality and well talented Technical and Other Man power Staff in UP East circle .

We are also engaged with some non telecom companies ( Yes Bank, Big Bazar, Exide Life Insurance ,Bharti Axa ) by providing man month basis House keeping & Maintenance related services in Circle UP East.



# *PROJECTS:*



- ✓ **IDEA:** BTS I & C, MW LINK, DISMANTLING, Civil, Electrical
- ✓ **VODAFONE:** BTS I & C, MW I&C, Dismantling, EMF
- ✓ Civil, Electrical, Acquisition, Shelter Installation
- ✓ **AIRCEL:** EMF, RF Survey, DT & Benchmarking
- ✓ **TTSL:** BTS I & C, MW LINK, RF SURVEY & DT
- ✓ **ERICSSON:** BTS I & C, MW LINK, RF SURVEY & DT
- ✓ **ALUMS:** BTS I&C, MW I&C, EMF & DT
- ✓ **CERAGON:** MW LINK
- ✓ **MTS:** EMF & Site Dismantling
- ✓ **UNINOR:** EMF SURVEY & TESTING
- ✓ **DEFENCE RESEARCH & DEVELOPMENT ORGANISATION:** ENGINEERING AND ELECTRICAL



# SERVICE

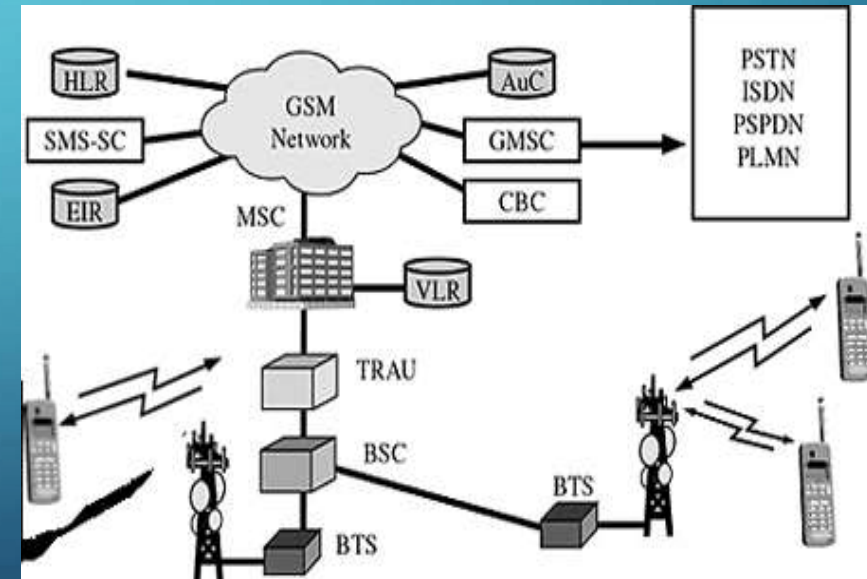


## NETWORK MANAGEMENT SERVICE:

JACK ENTERPRISES have well experience project management team to do best network planning and Implementation. It helps our client and Network Operators to successfully completion the project within time and optimum manpower.

## JACK ENTERPRISES have four types of management Service:

- ☐ Pre Implementation Management Service
- ☐ Implementation Management Service
- ☐ Post Implementation Management Service
- ☐ Regulatory Management Service



## NETWORK ENGINEERING SERVICE:

Site Survey & Acquisition  
R.F. Survey  
LOS Survey  
EMF Survey & Testing



- **TELECOM EQUIPMENTS INSTALLATION & COMMISSIONING:**

JACK ENTERPRISES have vast experience in Equipments Installation & Commissioning:

BTS Installation & Commissioning  
MW Installation & Commissioning





- **DRIVE TEST & NETWORK OPTIMIZATION:**

Our clients can avail from us excellent Drive Test and Network Optimization. We take the Drive Route and Site Data for the sites to be driven from the customers and the Drive Test LOG File of the specified Drive Route / Site is saved and the same is handed over to the customer at the end of the day. DT Resource identifies the routine field optimization issues, such as cable swapping, missing neighbors and then rectifies the same with the help of customer.

**CIVIL FOUNDATION WORK:**

We offer to our clients for civil work as tower foundation, shelter foundation works etc. We have the experience civil engineers.



## **ELECTRICAL EQUIPMENTS INSTALLATION & COMMISSIONING:**

We are one of the leading service providers of Electrical Equipment and Commissioning Services. Our team of engineers and technicians helps us in offering effective services by utilizing their technical skills. All the professionals have in depth knowledge of installing a wide range of electrical equipment as per the requirements of our clients. We undertake our services as per the exact requirements of our clients.

### **• THE ELECTRICAL EQUIPMENTS SUCH AS:**

DG Set

Power Plant

Battery Bank

Rectifier

PIU

All type of earthing work



# INDUSTRIAL ELECTRICAL SPECIALISTS



- We're passionate about providing highly specialized service. Our expertise allows us to efficiently service and maintain the equipment necessary to keep North America up and running. With over 9 years of industrial experience, we have a proven commitment to completing projects on time and within budget. The expertise found at New Electric can handle all of your electrical installation and repair needs, from motor controllers to relay logic, no matter how big or small. Always prepared with fully equipped vehicles, our skilled technicians are ready to provide fast and reliable service. Each one of our branches maintains volumes of controlled inventory parts and equipment that enables us to provide unsurpassed 24-hour service, 7 days a week. Staffed with design engineers, project managers, electronic technicians and dedicated service professionals; New Electric has earned a trusted reputation for delivering successful results and maintaining exceptional standards of quality and customer service.
- **SERVICES:** Programming/Engineering • Power Distribution • Machine Wiring • Backup Generators • Maintenance Contracts • Troubleshooting • Equipment Installs • Equipment Relocation • Consulting / Training • Machine Commissioning • Maintenance Shift Coverage • Power Factor Correction

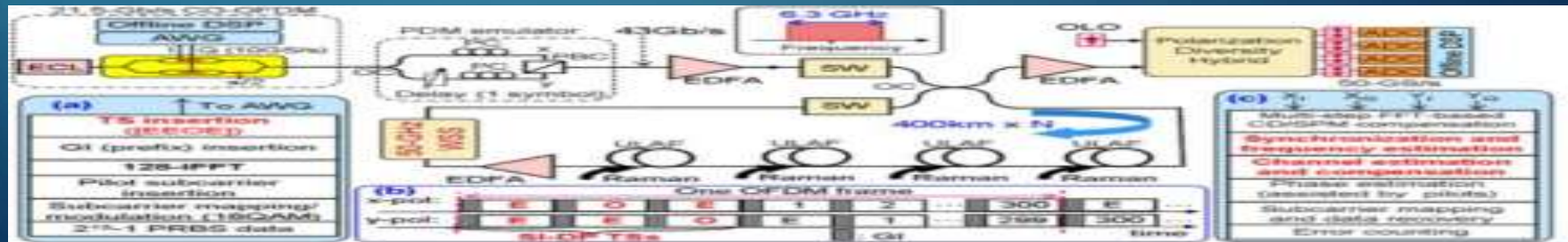




# HIGH VOLUME RESIDENTIAL & COMMERCIAL ELECTRICAL CONTRACTING



- Electric Connection, based in Lake Worth • Jack enterprises , is a statewide electrical contracting firm specializing in high-volume residential and commercial construction projects. Since its inception in 2009, Electric Connection has developed and maintained long-term relationships with many of the industry leaders and the company prides itself on getting the job done on-time and on-budget.
- Our experienced and professional personnel provide the highest level of service, professionalism and expertise as part of a winning team in completing the projects, whether it's a 150,000-square-foot building or a residential development with 5,000 homes





## TOWER ERECTION WORK:

We have been offering to our clients for supply and erection all type of towers. All our team engineers and technicians help to do better service in tower erection work as per the client's expectation

## OPERATION & MAINTENANCE:

Our organization is engaged in offering Operation and Maintenance Services to our clients. We offer telecommunications equipment and related services to mobile and fixed network operators globally. Further, we offer a portfolio of telecommunication and data communication systems and services covering a range of technologies and provide end-to-end solutions for all major mobile communication standards. We have been associated with the Indian telecommunications industry for almost a century and have been offering a complete spectrum of telecom solutions in India.





- **OPTICAL FIBRE INSTALLATION :**

We are one of the leading service providers for Optical Fibre Installation. Our team of engineers and technicians helps us in offering effective services by utilizing their technical skills. All the professionals have in depth knowledge of installing an Optical Fibre as per the requirements of our clients. We undertake our services as per the exact requirements of our clients



# PROUDLY WORKING WITH DRDO



- We are priority vendor of DRDO for supplying in electrical, electronics ,mechanical and civil equipment and goods we are also taking care for there devices like installation of air-condition unit electrical unit in aircraft in there laboratory or as per there requirements .





## TRAINING & PLACEMENT:

It gives us immense pleasure to introduce **JACK ENTERPRISES**, which imparts telecom training with a global vision and mission to develop world class Quality telecom professionals to meet this ever expanding requirement of the industry.

**JACK ENTERPRISES**, is one of the leading organization in telecom industry, have lot of experience in telecommunications and mobile technology as RF survey, MW survey, Site acquisition, Network testing & Optimization BTS & MW installation, Commissioning and Electrical work.



## OUR QUALITY, CUSTOMER'S RIGHT



- JACK ENTERPRISES , represents quality through consistent communication with our clients and employees; we plan our business to exceed the expectation of every client:

Maintaining a long term relationship

Conducting our business honestly and ethically

Distinguish ourselves by unrivalled Quality of services and customer satisfaction

Exceed client expectation by supplying the finest resources

**IN OUR ENDEAVOUR TO REACH THIS GOAL SUCCESSFULLY, WE ARE METICULOUSLY THE FOLLOWING POINTS.**

Listen to all the views & points on the needs and expectations of our clients

Do the better and think the better policy To appoint individual Project Manager and Quality Engineer for all projects  
Training provides all staffs to maintain the standard

## OUR CLIENT





# CONTACTS

## Our Corporate Office :

**JACK ENTERPRISES**

**C 2085/3 Indira nagar lucknow 226010**

## Registered Office :

**JACK ENTERPRISES**

**17 Kalhansh Bhawan Kanchana Bihary Marg Kalyanpur Lucknow 226022**

## BRANCH OFFICE:

**JACK ENTERPRISES**

**No 6 Lake Viewnext to Prashant Layout Kodigehalli, KR Puram Hoblli,  
Kadugodi Post Bangalore Pin – 560067**

## Our Contact NUMBER.:

**TeleFax : +91-0522-2750869**

**Mob.: +91-9670777781, +91-8960777781**

## E-mail :

**[jackenterprises@gmail.com](mailto:jackenterprises@gmail.com)**



